



GMT MONTHLY MEMBERSHIP PROGRESS REPORT

Results as of: 11/30/2023

Multiple District 321

LOCATION: INDIA

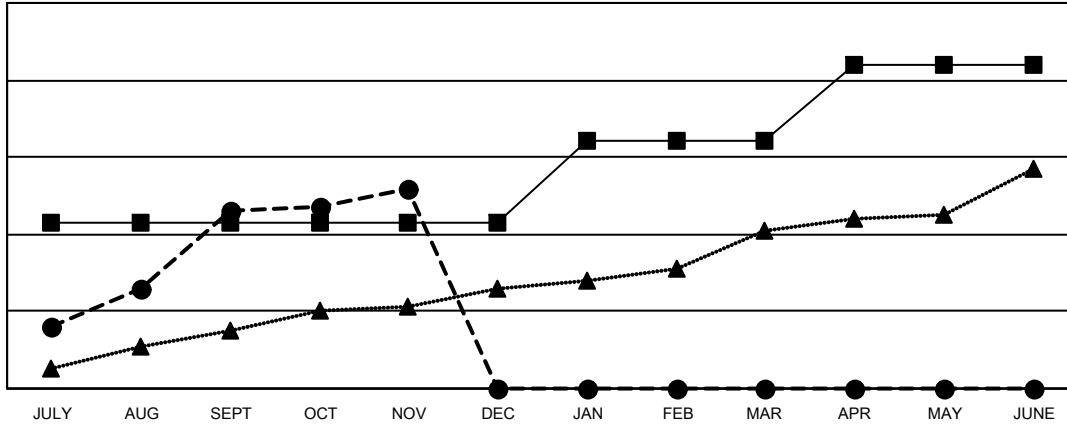
GMT: OPEN

GMT CA 6 - I

Clubs			
RESULTS FOR 2023-2024			
QUARTER	NEW CLUB GOAL	NEW CLUBS	DROPPED CLUBS
JULY/AUG/SEPT	43	46	9
OCT/NOV/DEC	0	6	3
JAN/FEB/MAR	21	0	0
APR/MAY/JUNE	20	0	0

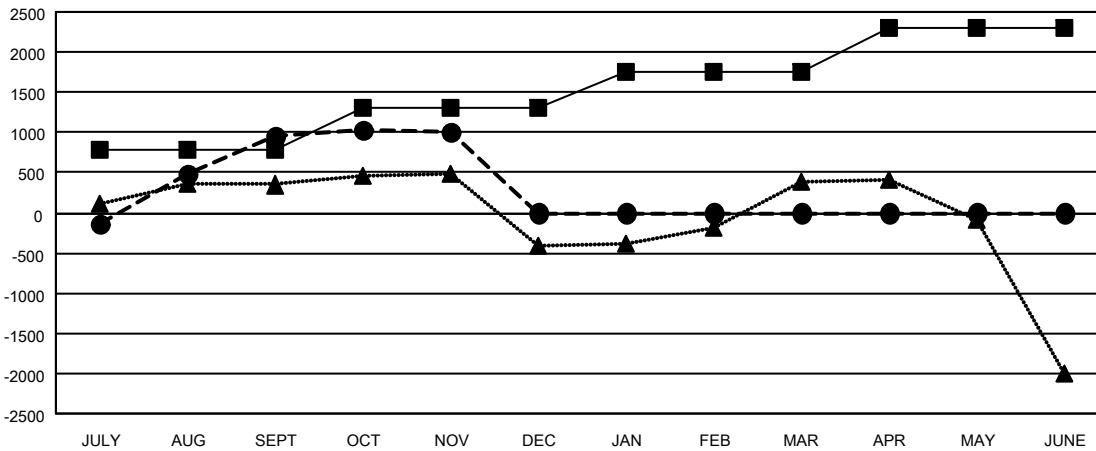
Members			
RESULTS FOR 2023-2024			
QUARTER	MEMBER GROWTH NET GOAL	MEMBER GROWTH ACTUAL	DROPPED MEMBERS ACTUAL (including transfers)
JULY/AUG/SEPT	790	2,914	1,565
OCT/NOV/DEC	515	586	483
JAN/FEB/MAR	442	0	0
APR/MAY/JUNE	545	0	0

GOALS AND ACTUAL NEW CLUBS CUMULATIVE



- - CURRENT YEAR GOALS FOR NEW CLUBS
- - CURRENT YEAR ACTUAL NEW CLUBS
- ▲ - LAST YEAR ACTUAL NEW CLUBS

GOALS AND ACTUAL MEMBERS CUMULATIVE



- - MEMBER GROWTH NET GOAL
- - MEMBER GROWTH ACTUAL
- ▲ - LAST YEAR MEMBERSHIP ACTUAL

DROPPED CLUBS: 12	461 CLUBS OF 1182 ADDED 1 OR MORE NEW MEMBERS	GENDER DISTRIBUTION
		MALE 22,339 (68.88%)
		FEMALE 10,092 (31.12%)
DROPPED MEMBERS	CLICK HERE FOR CUMULATIVE MEMBERSHIP DATA	TOTAL FAMILY UNIT MEMBERS 18,738
DECEASED 53		FAMILY MEMBERS PAYING HALF DUES 11,282
CLUB CANCELLED 92		
OTHER 1,903		
TOTAL 2,048		